

# Campaign PopUp Display

## ASSEMBLY INSTRUCTIONS

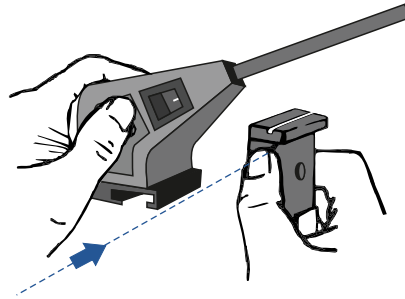
### Contents of Case



- Frame
  - Channel Bars in Bag
  - Center Panels
  - Endcaps
  - Halogen Light(s)
  - Emergency Repair Kit
  - Fabric or Graphic Case Wrap\*
- \*Not always included

### Installing Lights

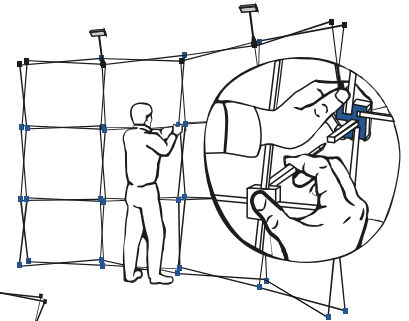
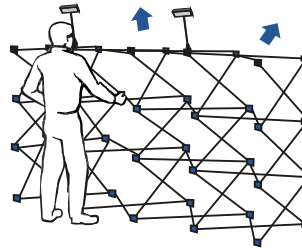
Position frame in front of you with the Black hubs at the top, and facing you.



STEP 1

### Expanding the Frame

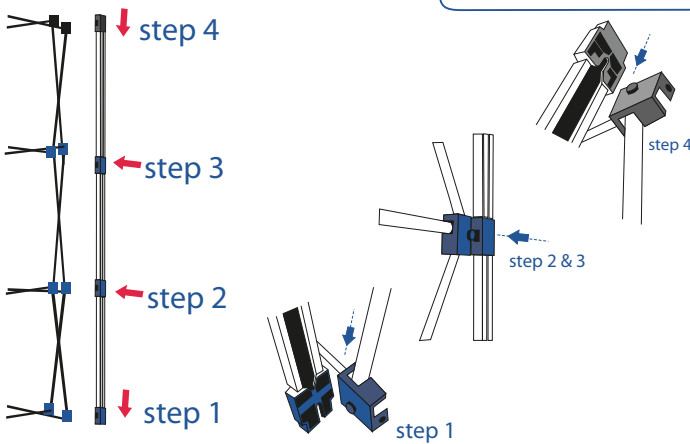
Pull the frame upwards extending in all directions.



Lock ALL the connectors

STEP 2

### Channel Bars

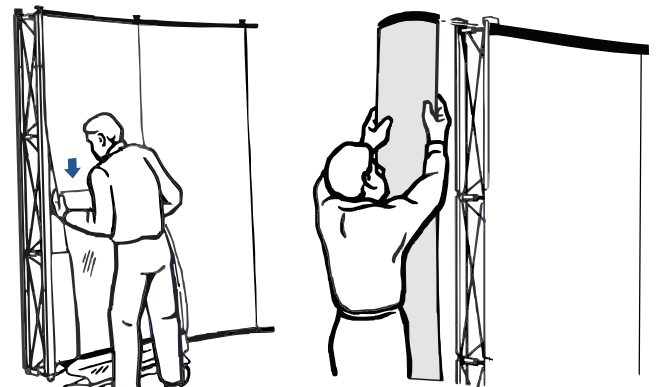
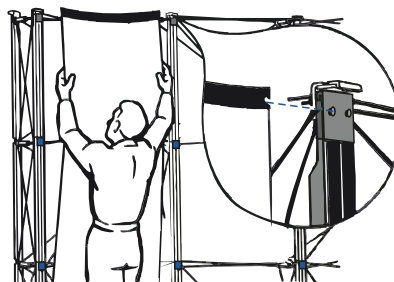


STEP 3

### Attaching Panels

Attach panels in order, left to right or right to left, and finish with the end caps.

It may be necessary to adjust panels for improved alignment.



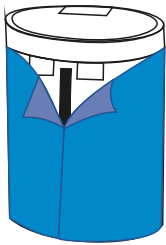
STEP 4

# Campaign PopUp Display

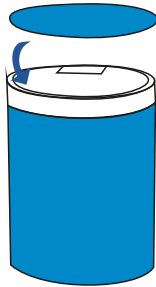
## DISASSEMBLY INSTRUCTIONS

### Case to counter conversion

Wrap fabric/graphics around the case as shown.



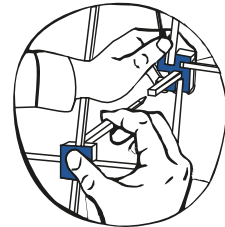
Place top piece into grooves on the case lid.



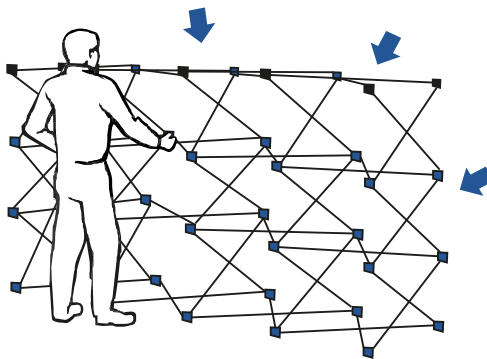
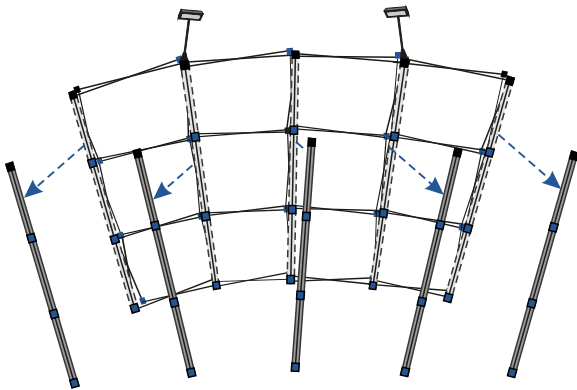
### Disassembly & Repacking

1. Remove panels starting at the bottom and carefully pulling upward, then unhooking from the hubs at the top. Roll all the panels together with the graphic/fabric facing outward.
2. Starting at the top, remove the channel bars and pack in their carry bag.

Before collapsing frame, release ALL connectors by depressing lever.



3. Stand in front of the frame and collapse it by gently pulling the left and right sides together as shown. The display will collapse with minimal effort.
4. Pack components as shown.



Note: When stored, panels must be rolled with fabric/print outside.